

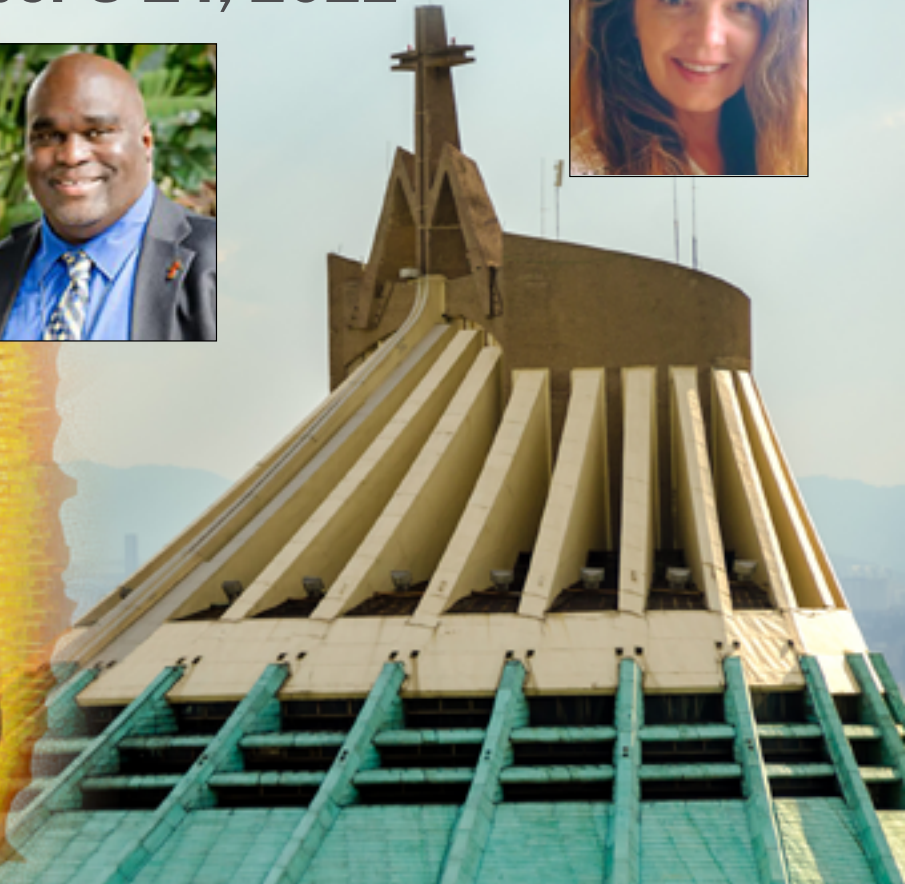
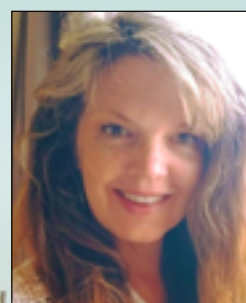
OUR LADY OF GUADALUPE

Pilgrimage to

MEXICO

*with Fr. Andrew McNair,
Deacon Harold Burke-Sivers,
and Ellen Holmes Steeves-LeBlanc*

7 Days
December 8-14, 2022



For More Information Contact:

Select International Tours

Ellen Holmes Steeves-LeBlanc

910-376-0058 aplace2bpresent@gmail.com

800-842-4842 mirela@select-intl.com

selectinternationaltours.com



WHAT'S THE COST?

Land and Air
\$2290.00

Solo Traveler
(Additional Cost)
\$300.00

Prices are valid only if the deposit is received no later than September 3, 2022

Final payment due October 9, 2022

Fr. Andrew McNair is a native of Swansboro, North Carolina. He entered the seminary in 1985 and was ordained a priest in 1997 in Rome, Italy. He studied classical humanities in Salamanca, Spain, and philosophy and Theology in Rome. Before ordination, he served as a missionary for three years in the Yucatán peninsula in Mexico, working with the Mayan natives.

After finishing his graduate studies, Fr. Andrew taught Theology at Mater Ecclesiae College, in Greenville, Rhode Island for eight years. During this time, he was a columnist for the National Catholic Register. In 2008, Fr. Andrew was assigned to parish ministry and appointed chaplain for the Office of Black Catholic Church Ministry in the Diocese of Providence, R.I. He served as assistant pastor of Holy Spirit parish in Central Falls, R.I., for two years and as assistant pastor of Our Lady of the Assumption in Providence, R.I. for one year. In 2012, he was appointed pastor of SS John and James parish in West Warwick, R.I.

In 2014, Fr. Andrew was appointed pastor of St. Anthony of Padua Parish in Southern Pines, North Carolina for a term of 6 years. In 2016, he was installed as Chaplain for African American Catholics for the Diocese of Raleigh, North Carolina for a term of three years.

On July 1, 2020, the Most Rev. Thomas Olmsted, Bishop of the Diocese of Phoenix, appointed Fr. Andrew as Parochial Vicar of SS. Simon and Jude Cathedral and on April 18th, 2021, he was appointed as Chaplain for the African American Community for the Diocese of Phoenix. In addition to this, Bishop Olmsted appointed Fr. Andrew as Spiritual Advisor to Prison Ministry for the Diocese of Phoenix. He currently serves as well as the host of the Youtube podcast, "Let The Church Say AAMEN". Fr. Andrew hopes to serve in the Diocese of Phoenix for many years to come. Please pray for Father as he celebrates this year his 25th anniversary of ordination to the priesthood on December 24, 2023.

DAILY ITINERARY

✠ December 8, Wednesday, DAY 1: DEPART U.S.A

Depart Phoenix Airport to Mexico City. Upon arrival we are greeted by our tour escort and transferred to our hotel, located in the historical area of the city, an active area filled with shops, markets and restaurants. Dinner and overnight in Mexico City. (Dinner at the hotel)

✠ December 9, Thursday, DAY 2: MEXICO CITY – FEAST OF JUAN DIEGO

St. Juan Diego was beatified on May 6, 1990 by Pope John Paul II, and canonized on July 31, 2002. His feast day is celebrated on December 9, and he is the patron saint of Indigenous people. Juan Diego was born in Mexico. He lived a simple life as a weaver, farmer and labourer. Juan was a member of the Chichimeca tribe. They called him the talking eagle. His Christian name was Juan Diego. On December 9, 1531, Juan rose before dawn to walk fifteen miles to Mexico City to attend daily Mass. As he passed Tepeyac Hill, he heard music and saw a glowing cloud encircled by a rainbow. A woman's voice called him to the top of the hill. There he saw a beautiful young woman dressed like an Aztec princess. She said she was the Virgin Mary and Mother of the true God. She asked Juan to tell the bishop to build a church on that site, so she could be present to help and defend those who were suffering and in pain. After Juan's mission was completed, he became a hermit. He spent the rest of his life in prayer and penance.

After a buffet breakfast, we arrive at the Basilica of Our Lady of Guadalupe by way of the Plaza of the Three Cultures. This plaza symbolizes the unique blend of pre-Hispanic, and Hispanic cultures that make up Mexico. Visit the Church of Santiago Tlatelolco where St. Juan Diego was baptized. Then continue to Our Lady of Guadalupe Shrine, built in response to Our Lady's request to the visionary, St. Juan Diego Cuauhtlatoatzin. We celebrate Mass, see Tilma, and watch the Native procession with drums. See the gold Crucifix that was bent from a bomb blast in 1924. After this visit, we enjoy a city tour of Mexico City. See the oldest and largest cathedral in all of Latin America, the Metropolitan Cathedral. Throughout our time in the cathedral, we will be amazed by the stunning paintings, altar pieces, and statues. Additionally, we have the opportunity to view the Tomb of Bishop Zumarraga, who was the first Bishop of Mexico, also known as the Protector of Indians. Our tour continues as we transfer to the National Palace. This extraordinary palace has been a building of the ruling class of Mexico since the Aztec Empire's rule. Time permitting, we visit the Plaza of Santo Domingo. This plaza contains two Holy places that are architecturally exquisite: the Church of Santo Domingo, the first church built by the Dominicans in 1576, and the Shrine of Our Lady of the Rosary, the first Rosary Shrine in Mexico. Also on our tour, we visit the Shrine of Our Lady of Covadonga, the headquarters of the Confraternity of the Most Holy Rosary. This Shrine is dedicated to the Patron Saint of Asturias (Spain). Dinner at Azulejos Restaurant or similar. Overnight in Mexico City. (B. L. Dinner at a local restaurant)

✠ December 10, Friday, DAY 3: OCOTLAN – SAN MIGUEL

After breakfast, we enjoy a ride through the mountains as we travel to Tlaxcala and the Shrine of San Miguel Del Milagro. Upon arrival, our priest will celebrate Holy Mass at the site where St. Michael the Archangel appeared to Diego Lazaro in 1631, directing him to the Grotto and to a well of miraculous curative waters. This is known as the Lourdes of Mexico because of its miraculous statue and spring water. Continue to Ocotlan to visit the beautiful church and see the miraculous image of Our Lady burned into a tree trunk after she appeared to Juan Diego Bernardino in 1541. Perfectly preserved, the image in a tree resides in the Basilica of Our Lady of Ocotlan. Also see the Monastery of San Francisco-one of the first Catholic buildings in Mexico. Dinner and overnight in Mexico City. (B. Dinner at the hotel.)

✠ December 11, Saturday, DAY 4: PUEBLA

After a buffet breakfast, we depart for Puebla - City of the Angels and Churches, the fourth largest city in México and a great example of Spanish colonial architecture. The Puebla region is famous for its beautiful Churches and its hand painted "Talavera" tiles. We visit the unforgettable Chapel of the Rosary (celebrate Mass and Adoration to the Blessed Sacrament) TBC. Then enjoy visits to the Cathedral, Santo Domingo Church and the Santa Monica religious museum, and Church of St. Francis to see the incorrupt body of St. Sebastian. In the afternoon there is time to shop in the open-air market and bargain for souvenirs and silver. Dinner and overnight in Mexico City. (B. Dinner at the hotel)

WE GIVE BACK



Select to Give is a not-for-profit foundation, founded by Select International Tours, an award winning, thirty-five year old faith-based tour operator specializing in group trips Europe, the Holy Land, Canada, Mexico, South America and the USA. Faith Travel Association awarded the "Impact Award" to Select International Tours for innovation and quality in travel.

Select to Give Foundation exists to help the Christians of the Holy Land and the Middle East! Through the funding and creation of programs and partnerships, we support innovative community efforts to help Christians achieve a safer and more prosperous existence.

Our organization's goal is to recognize and maximize human potential in Christian communities by offering assistance in establishing programs that provide opportunities for education, entrepreneurship, social justice and community building.

For More Information Contact Select International Tours
800-842-4842 selectinternationaltours.com selecttogive.org

✝ Dec 12, Sunday, DAY 5: MEXICO CITY – FEAST DAY OF OUR LADY OF GUADALUPE

After breakfast, we take part in the activities at the Shrine of Our Lady of Guadalupe, including the Procession of the Roses, followed by the Gospel Procession and Blessing of the Roses. Constant music and dancing by the natives takes place throughout the day and night. We have time to explore the Guadalupe Shrine, the Church of the Hill, Church of the Well, Monument of the Offerings, and Church of the Indians. After lunch, we may visit the Religious Museum and pray the Rosary at the Chapel of the Blessed Sacrament. Celebrate Mass at the Chapel of the Immaculate Conception of Salto de Agua. In the afternoon we visit the Church of Our Lady of Good Remedies where we see the giant statue of St. Michael the Archangel. Enjoy time for shopping and exploring the market and many artisan shops before we float through the Xochimilco Floating Gardens on a gondola-boat ride. Dinner and overnight in Mexico City. (B. Dinner at the hotel)

✝ December 13, Monday, DAY 6: MEXICO CITY – PYRAMIDS OF THE SUN AND THE MOON

After breakfast, we visit the Church of Santiago Tlatelolco, where St. Juan Diego was baptized. Continue to the Church of the Healing in Tlupetlac for Mass. In the afternoon we visit the Father Pro Museum and the Church of la Sagrada Familia. In the evening we enjoy a farewell dinner in a local restaurant and see the Mariachi Bands playing in Garibaldi Square. Overnight in Mexico City. (B, Special farewell dinner)

✝ December 14, Tuesday, DAY 7: DEPART MEXICO CITY FOR U.S.A.

We celebrate Mass at San Bernardino de Siena Church. Then transfer to the airport for our flight back to Seattle. We are met at the airport by a bus which will take us back to the church. (B,)



This active program covers a good amount of ground each day. You need to be able to walk for 60 minutes straight and on uneven surfaces. Some stairs will be encountered.

YOUR COMPREHENSIVE TOUR INCLUDES

- Round trip airfare to Mexico City from Phoenix Airport
- Airport taxes and fuel surcharges
- Accommodations for 6 nights Mexico City
- Buffet breakfast daily
- 4 hotel dinners (beverages are not included)
- 2 restaurant dinners
- 1 lunches
- Private Air-conditioned motor coach
- English speaking guide for duration of the trip
- All admission charges as per the itinerary
- Parking fees for motor coaches
- Select International Tours Travel Portfolio
- Confirmation of daily Mass
- We recommend you consider purchasing CFAR Travel Protection

RATES DO NOT INCLUDE

- Personal expenses
- Anything not mentioned in above inclusions
- Beverages at meals unless otherwise noted
- Gratuities for guide/driver and hotel staff (please look at list that we recommend). At lunch we recommend a tip of \$1.00 per person per day. For extra luggage please tip \$1.00 per person per bag.
- Church donations

BAGGAGE CHARGES NOT INCLUDED IN TRIP COST:

- Checked baggage is not included with your flights. The average cost is \$30 per bag per person each way
- Baggage handling at train stations, and airports. *Check with your airline for baggage fees and restrictions
- Any charges incurred due to excessive luggage including the cost of an additional baggage vehicle or portage charges





Important information regarding your trip:

Group Air:

Select International Tours is a tour company that specializes in group travel. A group is ten or more people traveling together. For each group we negotiate and secure group air contracts with all major airlines departing from the designated airport. This enables us to keep all passengers within a group traveling together, in most cases utilizing best air rates.

Group air contracts differ from individually purchased airline tickets in many ways. When group air contracts are negotiated, we deposit a certain number of seats to hold the space and GTD the rate. Unused seats must be released at least 90 days prior to departure to avoid a \$ 100.00 per unused seat penalty.

It is important to receive your registration by the deadline stated on the flyer. Once the seats are released back to the airlines, we may be able to accommodate passengers at a different air rate or on a different airline.

Group air contracts limit types of deviations allowed and in some cases issuing tickets at individual rates may be necessary. Individual rates & reservations are not GTD until the tickets are issued. In order to issue an individual ticket we must receive full payment. Taxes and fuel costs are subject to change until the tickets are issued.

Domestic add-on tickets:

We can assist you with domestic air to connect with our international group air if you wish. Indicate on the registration form which airport you wish us to research air from. We are not responsible for fees or charges incurred in case dates change or the trip is cancelled. However, when buying a domestic add-on ticket through Select we may be able to assist in case of changes.

We will provide you with best schedule to connect with the flight (we are not able to help you with tickets that do not connect directly to the international flight) and the best price we can offer. Our information will be sent to you by e-mail. We require an acceptance within 24 hours of our offer along with full payment otherwise the rate is subject to change based on availability. We cannot quote any domestic air requests more than twice.

Business Class and Economy Plus Seats:

We are happy to assist you with business class and economy plus seats. Passengers must be registered on one of our trips to receive a quote. We will quote the available rate which is subject to change until we receive payment to purchase the seats. Usually Economy Plus Seats require the group tickets to be issued before the ability to upgrade.

Passport and Visa information:

All airlines require us to submit valid passport information including full name (first, middle and last), date of birth, gender, country, in which your passport has been issued and passport expiration date. To ensure that we can provide this information accurately, we require a photo copy of each person's passport traveling on each tour. Your passport must be valid 6 months from the trip return date. It is the passenger's responsibility to check if visas are required for the destinations visited and to obtain any necessary travel documents. Select International Tours does not provide information or assistance about passports or visa requirements.

Frequent Flyer Numbers:

Select International cannot assist if you wish to reserve air using FF miles. We can update your record with Frequent Flyer #'s only if you note the number on the registration form. Otherwise please call the airline directly.

Seat Requests & Seat Changes

Select International Tours DOES NOT provide assistance with passenger's seating preferences or specific seat requests. Due to the large number of passengers we work with, we are unable to provide this service unless the request is due to a medical issue. In this case, we will request a seat with the airline but cannot guarantee that the seat will be confirmed. Please understand that although requests are being made directly with the airline, not every request is guaranteed or granted by the airline. If you would like to have a seat number assigned, it is best to contact the airline directly upon receipt of your ticket confirmation # or change your seats at the time of check-in at the airport prior to departure.

“Land Only” (not purchasing group air with Select International Tour Package:

We understand that some passengers may wish to purchase their own air transportation. Arranging transportation on your own may give you the ability to use flight miles for your ticket, secure the seat you desire/require, or deviate from the group. We offer land only prices on all our tours.

Airport transfers are not provided for passengers purchasing land only (not purchasing air with us) if arriving or departing at any time different from the group. If you wish to enjoy the benefit of the group transfer, please be sure you are at the airport at the same time as the group. On certain itineraries airport transfers, may be very costly as the group may be traveling a far distance from the airport on the first or last day.

If the flight schedule you purchase arrives or departs at a time different from the group, it is your responsibility to join the group either at the airport or at the first hotel.

If you register for the air and land package and convert to land only, a \$ 100.00 service charge will be assessed should the change be made within 90 days of departure.

Flight cancellations or delays:

In case your flight is cancelled or delayed please work with the airline directly at the airport to be rebooked on the first available flight out. Once you know your new flight and time of arrival contact the emergency number provided in your travel documents to notify your guide of the delay. Your travel documents will contain an emergency number and the guide's phone. Any incurred costs are out of pocket and not included in the trip cost. The cost of private transfers in case of delays are not covered as part of your trip cost. You may file a claim with your Travel Protection Insurance company or with the airlines upon your return. Receipts will be required.

Single rooms:

A limited number of single rooms are available on each trip. If you wish to share a room let us know at the time of registration. We will attempt to connect you with another person looking to share. The cost of Travel Protection insurance will be adjusted to reflect the single supplement as insurance cost depends on total trip cost. Should we not be able to accommodate all single room requests and you are not able or willing to share, a complete refund will be provided.

If your roommate cancels, and the room is converted into single usage, a single supplement will be charged.

How much walking will there be on this trip?

This active program covers a good amount of ground each day. The days are busy, usually starting with a wake-up call around 7AM and departure by 9AM or earlier. We aim to be back at the hotel between 5PM and 6PM. Times may vary depending on destination and program.

Expect from three to four hours walking on some touring days. The pace is moderate, however you will encounter some uneven surfaces, stairs, steps, cobblestones, and significant slopes. Some tours require walking in the open air with no shade and no seating available.

**Scroll to the end of the
document for
registration form**



GROUP DELUXE

GROUP TRAVEL PROTECTION PLAN

SCHEDULE OF INSURANCE COVERAGE AND OTHER NON-INSURANCE SERVICES

Trip Cancellation**	Trip Cost*
Trip Interruption**	150% of Trip Cost
Travel Delay – 6 hours	\$750 (\$150/day)
Missed Connection – 3 hours	\$500
Baggage/Personal Effects	\$1,500
Baggage Delay – 24 hours	\$400
Non-Medical Emergency Evacuation	\$150,000
Accident & Sickness Medical Expense	\$50,000
Emergency Medical Evacuation, Medical Repatriation & Return of Remains	\$250,000
Cancel for Any Reason (CFAR)***	Optional (90% of Trip Cost*)
Non-Insurance Worldwide Emergency Assistance Services (Provided by OnCall International)	Included

Coverages may vary and not all coverage is available in all jurisdictions.

* Subject to maximum benefit amount of \$20,000.

** For \$0 Trip Cost, there is no Trip Cancellation and Trip Interruption is limited to \$500 return air only

*** CFAR coverage is up to 90% of the prepaid, nonrefundable trip cost (subject to \$20,000 maximum). CFAR is optional and available for individuals or your entire group. Trip cancellation must be 48 hours or more prior to scheduled departure. CFAR is available if purchased at the time of original plan purchase and within 14 days of the date your initial deposit for your trip is received, and you paid your Travel Supplier for the full cost for all non-refundable trip costs for your trip prior to your cancellation of your trip. For \$0 Trip Cost there is no CFAR. This benefit is not available to residents of New York State.

Cancel for Any Reason up to 90% of Trip Cost!*

PER PERSON RATES

Cost of Trip	Rates	With CFAR*	Cost of Trip	Rates	With CFAR*
\$0	\$25	N/A	\$5,001-\$5,500	\$424	\$582
\$1-\$300	\$40	\$54	\$5,501-\$6,000	\$466	\$640
\$301-\$500	\$47	\$64	\$6,001-\$6,500	\$506	\$696
\$501-\$1,000	\$70	\$96	\$6,501-\$7,000	\$582	\$800
\$1,001-\$1,500	\$112	\$153	\$7,001-\$7,500	\$623	\$856
\$1,501-\$2,000	\$138	\$190	\$7,501-\$8,000	\$644	\$886
\$2,001-\$2,500	\$174	\$239	\$8,001-\$8,500	\$673	\$926
\$2,501-\$3,000	\$206	\$284	\$8,501-\$9,000	\$714	\$982
\$3,001-\$3,500	\$233	\$320	\$9,001-\$9,500	\$748	\$1,028
\$3,501-\$4,000	\$290	\$399	\$9,501-\$10,000	\$798	\$1,097
\$4,001-\$4,500	\$331	\$455	\$10,001-\$11,000	\$881	\$1,211
\$4,501-\$5,000	\$383	\$526	\$11,001-\$12,000	\$962	\$1,323

Rates are available up to \$20,000 trip cost.

The above rates are for trips up to 30 days – for each day over 30 add \$6 per person per day.

All of the above rates are for the plan which includes insurance and non-insurance services.

*Cancel For Any Reason (CFAR) benefit not available to residents of New York State.



TRAVEL INSURED INTERNATIONAL
A CRUM & FORSTER COMPANY



SELECT International

We share your faith

PAYMENT INFO:

To purchase the Travel Insured Group Deluxe Protection Plan with or without Cancel for Any Reason please mail this form with a check to:

Select International Tours
85 Park Avenue
Flemington, NJ 08822
(908)237-9262

APPLICATION:

Applicant Name(s): _____

Trip Name: _____

Trip Dates/Tour #: _____

Address: _____

Phone: _____

Email: _____

Trip Cost: _____

Optional CFAR* (please circle): YES NO

Plan Cost: _____

Applicant Signature _____

Travel Insured International

844-440-8113

groups@travelinsured.com

www.travelinsured.com

GENERAL LIMITATIONS AND EXCLUSIONS

Insurance benefits are not payable for any loss due to, arising or resulting from: 1. suicide, attempted suicide or any intentionally self-inflicted injury of You, a Traveling Companion, Family Member or Business Partner booked to travel with You, while sane or insane; 2. an act of declared or undeclared war; 3. participating in maneuvers or training exercises of an armed service, except while participating in weekend or summer training for the reserve forces of the United States, including the National Guard; 4. riding or driving in races, or speed or endurance competitions or events; 5. mountaineering (engaging in the sport of scaling mountains generally requiring the use of picks, ropes, or other special equipment); 6. participating as a member of a team in an organized sporting competition; 7. participating in bodily contact sports, skydiving or parachuting, hang gliding or bungee cord jumping; 8. piloting or learning to pilot or acting as a member of the crew of any aircraft; 9. being Intoxicated as defined in the Plan, or under the influence of any controlled substance unless as administered or prescribed by a Legally Qualified Physician; 10. the commission of or attempt to commit a felony or being engaged in an illegal occupation; 11. normal childbirth or pregnancy (except Complications of Pregnancy) or voluntarily induced abortion; 12. dental treatment (except as coverage is otherwise specifically provided); 13. amounts which exceed the Maximum Benefit Amount for each coverage as shown in the Schedule of Benefits of the Plan; 14. due to a Pre-Existing Condition, as defined in the Plan. The Pre-Existing Condition Limitation does not apply to the Emergency Medical Evacuation or return of remains coverage; 15. medical treatment during or arising from a Trip undertaken for the purpose or intent of securing medical treatment; 16. a mental or nervous condition, unless hospitalized for that condition while the Plan is in effect for You; 17. due to loss or damage (including death or injury) and any associated cost or expense resulting directly from the discharge, explosion or use of any device, weapon or material employing or involving chemical, biological, radiological or similar agents, whether in time of peace or war, and regardless of who commits the act and regardless of any other sequence thereto.

Additional Limitations and Exclusions Specific to Baggage and Personal Effects: Benefits are not payable for any loss caused by or resulting from: breakage of brittle or fragile articles; wear and tear or gradual deterioration; confiscation or appropriation by order of any government or custom's rule; theft or pilferage while left in any unlocked or unattended vehicle; property illegally acquired, kept, stored or transported; Your negligent acts or omissions; or property shipped as freight or shipped prior to the Scheduled Departure Date; or electrical current, including electric arcing that damages or destroys electrical devices or appliances.

Purchase Up to Final Trip Payment Due Date for Pre-Existing Condition Waiver!

The Pre-Existing Condition Exclusion will be waived if the protection plan is purchased at or before the final payment due date for this trip, for the full non-refundable cost of the trip and you are not disabled from travel at the time you pay the plan cost.

PLEASE REFER TO THE PLAN DOCUMENTS FOR A COMPLETE DESCRIPTION OF COVERAGE.

Select International Tours is not an insurer and does not have any liability for any coverage amounts. As a travel retailer, Select International Tours is not qualified or authorized to answer technical questions about the benefits, exclusions or conditions of any of the insurance coverages in the plan or to evaluate the adequacy of your existing insurance coverage. Select International Tours and its employees may offer and disseminate travel insurance under the direction of Travel Insured International (TII). You may have coverage from other sources that provides you with similar benefits but may be subject to different restrictions depending upon your other coverages. You may wish to compare the terms of this plan with your existing life, health, home, and automobile insurance policies. If you have any questions about this coverage, contact TII at 844-440-8113. Purchasing a travel protection plan is not required in order to purchase any other products or services offered by Select International Tours.

This document contains highlights of the plans. The plans contain insurance benefits underwritten by the United States Fire Insurance Company under Policy Form series T210 et. al. and TP-401 et. al. C&F and Crum & Forster are registered trademarks of United States Fire Insurance Company. The Crum & Forster group of companies is rated A (Excellent) by AM Best Company 2018. The plans also contain non-insurance Travel Assistance Services that are provided by an independent organization, and not by United States Fire Insurance Company or Travel Insured International. Coverages may vary and not all coverage is available in all jurisdictions. Individuals looking to obtain additional information regarding the features and pricing of each travel plan component, please contact Travel Insured.

DETAILS OF COVERAGE

Trip Cancellation & Trip Interruption: Insurance benefits can be paid up to the Maximum Benefit Amount shown in the Plan's Schedule of Benefits. For Trip Cancellation you can be covered for up to 100% of the Trip Cost (published penalties and non-refundable travel arrangements). For Trip Interruption you can be covered for up to 150% of the Trip Cost (non-refundable land or water travel arrangements and additional transportation costs paid). Reasons for Trip Cancellation and Trip Interruption are as follows:

- a) Your or a Family Member's or a Traveling Companion's or a Business Partner's death, which occurs before departure on Your Trip (for Trip Cancellation) or while You are on Your Trip (for Trip Interruption);
- b) Your or a Family Member's or a Traveling Companion's or a Business Partner's covered Sickness or Injury, which: a) occurs before departure on Your Trip (for Trip Cancellation) or while You are on Your Trip (for Trip Interruption), b) requires Medical Treatment at the time of cancellation or interruption resulting in medically imposed restrictions, as certified by a Legally Qualified Physician, and c) and prevents Your participation in the Trip (for Trip Cancellation) or prevents Your continued participation on Your Trip (for Trip Interruption);
- c) You or Your Traveling Companion being hijacked, quarantined, required to serve on a jury (notice of jury duty must be received after Your Effective Date), served with a court order to appear as a witness in a legal action in which You or Your Traveling Companion is not a party (except law enforcement officers);
- d) Your or Your Traveling Companion's primary place of residence or destination being rendered uninhabitable by fire, flood, burglary or other Natural Disaster. The Company will only pay benefits for Losses occurring within 30 calendar days after the Natural Disaster makes your destination accommodations uninhabitable. Your destination is uninhabitable if: the building structure itself is unstable and there is a risk of collapse in whole or in part; (ii) there is exterior or structural damage allowing elemental intrusion, such as rain, wind, hail, or flood; (iii) immediate safety hazards have yet to be cleared such as debris on roofs or downed electrical lines; or (iv) the rental property is without electricity or water. Benefits are not payable if a storm, snow storm, blizzard or hurricane is named on or before the Effective Date of Your Trip Cancellation coverage;
- e) a documented theft of passports or visas
- f) You or Your Traveling Companion being directly involved in a traffic accident, substantiated by a police report, while en route to Your scheduled point of departure;
- g) Bankruptcy or Default of an airline, cruise line, tour operator or other travel provider (other than the Travel Supplier, tour operator or travel agency, from whom You purchased Your Travel Arrangements) causing a complete cessation of travel services more than 14 days following Your Effective Date. Benefits will be paid due to Bankruptcy or Default of an airline only if no alternate transportation is available. If alternate transportation is available, benefits will be limited to the change fee charged to allow You to transfer to another airline in order to get to Your intended destination. This benefit only applies if the Plan has been purchased within 14 days of the date Your initial deposit/payment for Your Trip is received; and You insure the full cost of Your Trip subject to penalties or restrictions;
- h) unannounced Strike that causes complete cessation of services for at least 18 consecutive hours of the Common Carrier on which You are scheduled to travel;
- i) Inclement Weather that causes complete cessation of services for at least 18 consecutive hours of the Common Carrier on which You are scheduled to travel;
- j) felonious assault of You or Your Traveling Companion within 10 days of the Scheduled Departure Date;
- k) You or Your Traveling Companion is in the military and called to emergency duty for a national disaster other than war;
- l) involuntary employer termination or layoff affecting You or a Traveling Companion. Employment must have been with the same employer for at least 1 continuous year;
- m) a Terrorist Incident that occurs within 30 days of Your Scheduled Departure Date in a city listed on the itinerary of Your Trip. This same city must not have experienced a Terrorist Incident within the 90 days prior to the Terrorist Incident that is causing Your cancellation of Your Trip. Benefits are not provided if the Travel Supplier offers a substitute itinerary;
- n) Your family or friends living abroad with whom You were planning to stay are unable to provide accommodations due to life threatening illness, life threatening injury or death of one of them;
- o) Your normal pregnancy or attending the childbirth of Your Family Member. The pregnancy must occur after the Plan Effective Date and be verified by medical records;
- p) the primary or secondary school that You, Your Family Member or Traveling Companion attends continues classes beyond the predefined school year, due to unforeseeable events which: 1) occur after Your Effective Date for Trip Cancellation; and 2) cause the classes to extend beyond the Scheduled Departure Date of Your Trip. Extensions due to extra-curricular or athletic events are not covered;
- q) Mandatory evacuation ordered by local government authorities at Your Trip Destination (or official public evacuation notices or recommendations without a mandatory evacuation order issued) due to adverse weather or Natural Disaster;
- r) A transfer of You or Your Traveling Companion by the employer by whom You or Your Traveling Companion are employed on Your Effective Date which requires their principal residence to be relocated;
- s) You, Your Traveling Companion or a Family Member traveling with You is required to work during the Trip. A written statement by an unrelated company official and/or the human resources department demonstrating revocation of previously approved time off will be required;
- t) You, Your Traveling Companion or Family Member traveling with You are directly involved in the merger of Your employer or the acquisition of Your employer by another company. You, Your Traveling Companion or Family Member cannot be a company owner or partner;
- u) Your or Your Traveling Companion's place of employment is rendered unsuitable for business due to fire, flood, burglary or other Natural Disaster and You and/or Your Traveling Companion are required to work as a result.

All cancellations must be reported directly to the Travel Supplier within 72 hours of the event causing the need to cancel, unless the event prevents it, and then as soon as possible. All other delays of reporting beyond 72 hours will result in reduced benefit payments.

Travel Delay: The Insurer can reimburse You for covered expenses, up to the maximum shown in the Plan's Schedule of Benefits, if You are delayed while en route to or from, or during the Covered Trip for 6 or more hours due to a covered reason.

Missed Connection: You can be reimbursed if you miss your cruise or tour departure because Your arrival at Your destination is delayed for 3 or more hours due to a covered reason.

Baggage/Personal Effects: The Insurer can reimburse You up to the maximum shown on the Plan's Schedule of Benefits for loss, theft, or damage to Baggage and Personal Effects.

Baggage Delay: If Your checked baggage is delayed or misdirected for more than 24 hours from Your time of arrival at a destination other than Your return destination, You can be reimbursed for necessary personal effects.

Non-Medical Emergency Evacuation: The Insurer can pay for non-medical evacuation if, while on Your trip, a formal recommendation is issued for You to leave a country You are visiting due to a covered reason.

Accident and Sickness Medical Expense: The Insurer can pay benefits, up to the maximum shown on the Schedule of Benefits, if You incur Covered Expenses as a result of an Accidental Injury or a Sickness which first occurs during the Covered Trip.

Emergency Medical Evacuation, Medical Repatriation, & Return of Remains: If, while on a Trip, adequate Medical Treatment is not available in the immediate area, the Insurer can pay, subject to the limitations set out in the Plan, up to the maximum shown on the Plan's Schedule of Benefits, for Covered Transportation Expenses reasonably incurred if the Insured suffers an Injury or Sickness that is acute or life threatening and which warrants the Insured's transportation to the closest Hospital or medical facility capable of providing that treatment. Additional benefits and sub-benefits apply to this coverage, all of which are subject to the same maximum benefit amount.

Cancel For Any Reason: Optional Coverage applies only when requested on the application and the appropriate additional plan cost has been paid. CFAR must be purchased at the time of plan purchase and within 14 days of the date your initial trip deposit is received. If You purchase the Cancel For Any Reason protection and You cancel Your Trip for any reason not otherwise covered by this plan, the Insurer will reimburse You for up to 90% of the prepaid, forfeited, non-refundable payments or deposits You paid for Your Trip provided You cancel Your Trip more than 48 hours prior to your Scheduled Departure. This benefit is not available to residents of New York State.

Deposits and final payment: A deposit of \$500.00 per person by check should accompany the enrollment form along with your optional travel protection payment and a copy of your passport picture page by **September 7, 2022. Final payment is due by October 7, 2022. A late payment fee of \$100 will be charged per person for all payments received after the final payment date.** Please mail your payment to: Select International Tours, 85 Park Ave., Flemington, NJ 08822 Attn: Mirela Krstic, 800-842-4842, mirela@select-intl.com.

Your passport must be valid through June 14, 2023. Reservations will not be processed until we have passport copies. Prices quoted are based on payments by check. Prices: \$2,290.00 for the complete package; additional \$300.00 solo traveler, additional cost, (in room by yourself). For credit card payments add 4%.

Pilgrimage prices: Prices are based on minimum 20 passengers. Prices may be adjusted in the event of fewer than 20 passengers, changes in currency conversion rates, or amendments in local government taxes and/or fuel surcharges. Prices are in US dollars.

Solo Travel: A limited number of single rooms are available. Prices are based on two people per room. We do not guarantee roommates but will do our best to connect you with a someone willing to share.

Land Only Option: Land only services start and end at the hotels and do not include any airfare. You are welcome to transfer from the airport with the group if you arrive at the same time, otherwise, transfers are not included.

Tour Cancellation Policy: Individual deposits are refundable except for a \$350.00 per person handling fee for cancellations made 90 days or more before departure. A \$500.00 non-refundable fee will be assessed if the reservation is canceled between 90 and 60 days prior to departure. Within 60 days of departure all payments are non-refundable regardless of reason for cancellations. All airline tickets are non-refundable once issued. All cancellations must be in writing. Unused portions of the trip are not refundable. If a roommate cancels, the cost of a solo supplement will be added to your invoice. You may be eligible for a refund through your travel protection. Refer to the U.S. Policy by State on our website.

Trip Cancellation Protection: We strongly encourage you to purchase a **Travel Protection Plan**, for the protection of your travel investment. Please consider purchasing this plan at the time of initial deposit in order to be covered for pre-existing conditions. Visit our website, www.selectinternationaltours.com, for details and costs, per person, for the Group Deluxe and Cancel for Any Reason (CFAR) plans. Please note that CFAR is not available in NY State. The plans contain insurance benefits underwritten by the United States Fire Insurance Company. The plans also contain non-insurance Travel Assistance Services that are provided by an independent organization.

Airline, seating and special requests: To best accommodate our pilgrims, we often utilize Group Air Reservations. These allow more predictable transfer and tour schedules. However, when booking Group Air, the airline (not Select International Tours)

controls seating assignments. If you require very specific seats, we suggest that you book your own airfare and take advantage of our "Land Only" options. You may communicate directly with the airline to request seating changes, provide mileage program information, or change passenger contact information once you receive ticket numbers—approximately three (3) weeks prior to departure. We work with instant purchase airline tickets and or group rates. If you switch from air and land to land only within 90 days from departure you will be charged a \$100 service fee in addition to any airline charges. All special needs and requests due to medical or dietary restrictions must be requested in writing at least 60 days prior to departure. Business class and Premium Coach seats are available upon written request; as are add-ons from your hometown airport. If you require very specific airlines or schedules, we suggest that you book your own airfare and take advantage of our "Land Only" options.

Walking: Our trips require daily walking, sometimes up or down slopes, steps, and uneven terrain. We recommend preparing oneself, by walking before the trip. Anyone needing assistance is required to be accompanied by a qualified and physically-able travel companion. We are not responsible for any medical condition that occurs prior, during or after the trip.

Safety Procedures: Select International Tours has undertaken a reasonable inquiry, with all the suppliers (including airlines, hotels, bus companies and other service providers) used on our trips to ensure they have instigated the best available procedures regarding the pandemic- protective policies advised by local government and health authorities. The client understands and agrees that the supplier(s) may not apply those policies as diligently as the policies suggest. In addition even if the supplier makes a good faith effort to enforce its good practices, some travelers may simply refuse to cooperate. Therefore the client agrees not to hold Select International Tours responsible should they or anyone on the trip contract COVID-19 or any other illness during or after the trip. **Responsibility:** By accepting this confirmation, you agree that the Group Leaders and Select International Tours, Inc. have no responsibility for any acts or omission of the travel suppliers in your itinerary and during your trip. We have no special knowledge regarding the financial conditions of the suppliers, unsafe travel conditions, health hazards, or weather hazards at locations traveled. We are not responsible for flight delays or cancellations or any charges incurred due to unforeseen circumstances. Unused portions of the trip are non-refundable. For information about destination climate, risks, and safety please consult the appropriate on-line resources. For health information consult the Center for Disease Control and Prevention. You are responsible for checking passport, visa, vaccination, or other entry requirements of your destinations. Itineraries are subject to change. We are not responsible for any damaged, lost, or stolen articles. We are not responsible for any sickness, injury, or death during or after the trip. Travel documents will be mailed out approximately three (3) weeks before departure. Please review them carefully for any errors.

Shipping & Handling: \$15.00—not included in package price—will be added to each invoice. Your invoice will confirm the trip registration.

22MI12MXEH

ENROLLMENT/CONSENT FORM:

Our Lady of Guadalupe Pilgrimage to Mexico
with Fr. Andrew McNair, Deacon Harold Burke-Siver, and Ellen Holmes Steeves-LeBlance
December 8-14, 2022

Please complete this form and mail it to Select International Tours, along with your deposit, travel protection payment (if purchasing), and a copy of your passport picture page.



Last Name: _____ First Name: _____ Middle Name: _____

Street Address: _____

City: _____ State: _____ Zip Code: _____

Cell/Home Phone: _____ Contact Cell for Airline While Traveling _____

Email Address: _____ Land only : ☐ ☐ Need help with flights from _____

Medical/Dietary Needs _____
(Starts/ends at hotel, no airfare)

Updates about your trip will be sent by email only. Please be sure that your settings allow for electronic communication originating from mirela@select-intl.com

Room: (check one) Single (1 Bed) _____ Double (1 Bed, 2 People) _____ Twin (2 Beds, 2 People) _____ Triple (3 Beds) _____

Name of Roommate(s): _____ If single: ☐ Match me with a roommate ☐ Solo (in room by myself)

Emergency Contact (Name and Phone): _____

Enclosed is a check/money order in the amount of \$ _____ for my initial deposit.

☐ I'll take travel protection ☐ No thanks, I'll risk my trip Enclosed is \$ _____

Group Deluxe Plan ☐ or Cancel For Any Reason Plan ☐ Check detailed rates and policy at www.selectinternationaltours.com

Rates: Trip Cost \$2,001.00 - \$2,500.00 (\$174.00 Deluxe or \$239.00 with Cancel For Any Reason CFAR)

* Note: CFAR coverage is 90% of the nonrefundable trip cost. Trip cancellation must be 48 hours or more prior to scheduled departure. CFAR must be purchased at the time of plan purchase and within 14 days of your initial trip deposit. This benefit is not available to residents of NY.

By signing below, I consent to any necessary itinerary changes and price adjustments and agree to be bound by all Select International Tours & Cruises (SITC) TERMS AND CONDITIONS as outlined on this page and on the company website: www.selectinternationaltours.com/terms-conditions/. I also understand that (SITC) highly encourages the purchase of travel protection and that any fees associated with this trip cannot be waived for any reason. By declining to purchase travel protection I assume all financial losses associated with this trip which otherwise may be covered by travel protection. I also agree not to contest charges associated with the trip cost as outlined in this brochure. I understand that S.I. does not arrange specific seats on the flights.

Signature : _____ Date: _____

Not responsible for changes in group air.