

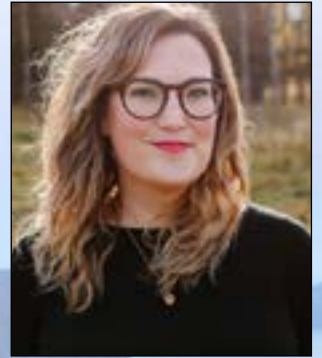


Irish Wisdom and Wonder



with Katie Marquette
and Christy Isinger

10 Days – October 2-11, 2024



For More Information Contact:

Select International Tours

800-842-4842

rebecca@select-intl.com

selectinternationaltours.com



What's the Cost

Land Only

\$3995.00

Group Air

\$600.00

Land and Air

\$4595.00

Solo Traveler

(Additional Cost)

\$895.00

Prices are per person

*Group Air Price based on a minimum of 10 passengers

Prices are valid only if the deposit is received no later than June 21, 2024

Final payment due August 3, 2024

Trip Code: 24RS10IRKM

Daily Itinerary

✿ Wednesday, October 2, DAY 1: DEPART THE USA

Depart the USA on an overnight flight to Dublin. Dinner and breakfast are served on the plane. Quotes for add-on airfare from most major airports and Premium Economy and Business Class upgrades are available upon request.

✿ Thursday, October 3, DAY 2: WELCOME TO IRELAND: THE LAND OF SAINTS AND SPIRITS

We arrive at Dublin airport, where our guide assists us to the bus. We travel through the central plain of Ireland to Athlone for a lunch stop and an opportunity to stretch our legs after the long flight by walking through this lovely Irish town. Our next stop is Kilbeggan Distillery, a traditional Irish whiskey distillery situated on the River Brosna. Kilbeggan is the oldest distillery in the world, dating back to 1757. We learn the art of making authentic artisan Irish whiskey and have a wee bit to sample for ourselves. Then continue to Co Mayo for a well-deserved night of rest. Dinner and overnight in Kiltimagh. (B.D)

✿ Friday, October 4, DAY 3: OUR LADY OF KNOCK – WESTPORT

This morning, we have time to sleep in a bit and enjoy a fantastic Irish breakfast at our hotel. The day starts with a visit to Knock, Ireland's national Marian Shrine. On the 21st of August, 1879, Our Lady, St. Joseph, and St. John the Evangelist appeared at the south gable of Knock Parish Church. Fifteen people, young and old, witnessed this apparition. From this miraculous occurrence, Knock has grown to the status of an internationally recognized Marian Shrine. The personal pilgrimage of Pope John Paul II in 1979, commemorating the centenary of the apparition, inspired an even greater devotion to the Shrine and endorsed the indelible seal of Vatican approval. We explore Knock and celebrate Mass at the Shrine. In the afternoon, we have time to explore Westport, a lovely Georgian town with fine-stoned bridges, tree-lined promenades, and many stories to tell. We find Rockfleet Castle and Burrenshoole Abbey in the heart of the town. We may learn about the Pirate Queen of Ireland, Grace O'Malley, or visit Mescan Brewery or the famous Matt Malloy's (of the Chieftains) Pub with traditional Irish music. This small town can be toured on foot, and there are many shops, bakeries, pubs, and restaurants along the way for you to explore. Dinner at leisure in Westport. Return to our hotel after dinner. (B)

✿ Saturday, October 5, DAY 4: CROAGH PATRICK HIKE IN THE FOOTSTEPS OF ST PATRICK

Following a delightful Irish breakfast, we drive to Croagh Patrick, the Holy Mountain St. Patrick climbed, where he spent 40 days praying and fasting. Today we follow in the footsteps of St. Patrick, hiking to the top of the mountain. On the mountain's slopes, we enjoy a picnic lunch our hotel has packed for us. In the afternoon, we visit Galway, the City of Tribes and music. We have a chance to explore the town on our own, visit a pub and meet some new friends. Overnight in the Galway area. (B.L)

✿ Sunday, October 6, DAY 5: IRISH TRADITIONS

This morning, we celebrate Mass with the Irish in the local church. Then our drive takes us through the beautiful Connemara region to Lough Na Fooley lake for a farm visit and a chance to meet the Joyce Country Sheepdogs, who keep a watchful eye on over 200 ewes spread out over a large farm area. We have time to wander through the Village of Cong, the setting for John Wayne's movie "The Quiet Man," before we make our way to the historic Ashford Castle for the long-established tradition of afternoon tea. Wonderfully preserved at Ashford Castle since 1868, afternoon tea includes finger sandwiches, homemade jam, and tasty pastries. It's the perfect way to spend a leisurely afternoon with new friends. Dinner and overnight at our hotel in the Galway area. (B. Afternoon Tea, D)

✿ Monday, October 7, DAY 6: MEET THE IRISH

The magnificent landscape of the Burren awaits us today. A local, Oliver Connell, welcomes us to his home for home-baked treats, poetry, storytelling, and, most importantly, live music in his family kitchen. Oliver's home is in the very heart of the Burren at Rockforest Tubber. (TBC)



This active program requires

walking ten to twelve thousand

steps daily, often on uneven

surfaces, cobblestones, and

some stairs.



Enroll online to guarantee your spot immediately. You can manage your trip, see your documents and itinerary, and view or pay your invoice, from any computer or mobile device.



Continuing our day, we visit the incredible Cliffs of Moher. Then, we warm up from the wind blowing at the Cliffs with an Irish coffee-making demonstration at the famous Durty Nellies Pub with an expert who talks about the history of Irish Coffee. Tonight we participate in the Bunratty Medieval Dinner. Overnight in the area. (B. Special dinner)

✿Tuesday, October 8, DAY 7: CASTLES, KINGS, AND SAINTS

This morning, we drive to see the magnificent Rock of Cashel, which was the seat of kings and bishops for 900 years and flourished until the early 17th century. We stop at the Holy Cross Abbey for a visit before arriving at Glendalough, a monastic site founded by St. Kevin. Famed for its beautiful scenery and historical monuments, Glendalough has been a center for pilgrims and visitors from the time of the founding of its monastery by St. Kevin in the 6th Century. St. Kevin is the subject of many legends, and he is often compared to St. Francis of Assisi. We learn about the history of the monastic community through an exhibition showing us the Golden Age of early Christian Ireland. Then enjoy a guided tour of the site, including a Round Tower, the Cathedral's ruins, and "St. Kevin's Kitchen," surrounded by an old cemetery. We arrive in Dublin and settle into our hotel. Dinner is at leisure tonight for an opportunity to visit the Temple Bar area. Overnight in Dublin. (B)

✿Wednesday, October 9, DAY 8: DUBLIN: THE FAIR CITY

After breakfast, we have a panoramic sightseeing tour of Dublin, including O'Connell Street, Phoenix Park, Leinster House, and the famous Irish doors. We visit St. Patrick's Cathedral, and Trinity College to see the Book of Kells, the Old Library, and the National Library. In the afternoon, enjoy exploring Dublin on your own and perhaps visiting the Dublin Writers Museum or the Abbey Theater. Tonight our group is split into smaller groups as we enjoy the guided Literary Pub Crawl Tour. Overnight in Dublin. (B.D)

✿Thursday, October 10, DAY 9: IRISH DRINK AND DANCE

We celebrate Mass before driving to the Storehouse, originally built in 1904 to house the Guinness fermentation process. The core of the building is modeled on a giant pint glass. The tour takes us step by step through the brewing process, finishing at the Gravity Bar, where we can taste a pint of Guinness while enjoying panoramic views over Dublin City. The afternoon is at leisure to explore the city on your own. Be sure to stop at Brazen Head Pub, the oldest in Dublin, for another great Irish experience. Our farewell dinner is at a local pub where we enjoy pub food and good Irish music. Overnight in Dublin. (B, Special dinner)

✿Friday, October 11, DAY 10: ON OUR WAY HOME

Following breakfast at the hotel, we are transferred to the airport for our flights back to the United States. (B)

YOUR COMPREHENSIVE TOUR INCLUDES

- Round-trip airfare from Newark to Dublin on non-stop United Airlines flights
- Airline surcharges, fuel, and airport taxes are subject to change until the time of ticketing.
- Accommodations in first-class hotels for eight nights
- Irish breakfast daily
- Whiskey Tasting
- One restaurant lunch
- Traditional Afternoon Tea
- Bunratty Medieval Dinner
- Irish Coffee demonstration
- Farewell dinner with music and dancing
- Three hotel dinners
- Private air-conditioned bus
- Sheep herding demonstration
- English-speaking tour manager
- Literary Pub Crawl Tour
- Visit to Trinity College
- All admission charges as per the itinerary
- Baggage handling for one suitcase per person only included at the hotels
- Parking fees for busses
- Local hotel taxes
- Whisper sets
- Select International Tours Travel Portfolio
- For a carefree trip we recommend you consider purchasing CFAR Travel Protection

RATES DO NOT INCLUDE

- Personal expenses
- Any items not explicitly mentioned in the listed inclusions
- Beverages at meals unless otherwise noted
- Gratuities for the guide(s), driver and hotel staff
- Church donations

BAGGAGE CHARGES NOT INCLUDED IN TRIP COST:

- Any airline baggage charges
- Baggage handling at train stations, airports, and hotels in excess of one suitcase per person
- Any charges incurred due to excessive luggage including the cost of an additional baggage vehicle or portage charges



Important information regarding your trip:

Group Air:

Select International Tours is a tour company that specializes in group travel. A group is ten or more people traveling together. For each group we negotiate and secure group air contracts with all major airlines departing from the designated airport. This enables us to keep all passengers within a group traveling together, in most cases utilizing best air rates.

Group air contracts differ from individually purchased airline tickets in many ways. When group air contracts are negotiated, we deposit a certain number of seats to hold the space and GTD the rate. Unused seats must be released at least 90 days prior to departure to avoid a \$ 100.00 per unused seat penalty.

It is important to receive your registration by the deadline stated on the flyer. Once the seats are released back to the airlines, we may be able to accommodate passengers at a different air rate or on a different airline.

Group air contracts limit types of deviations allowed and in some cases issuing tickets at individual rates may be necessary. Individual rates & reservations are not GTD until the tickets are issued. In order to issue an individual ticket we must receive full payment. Taxes and fuel costs are subject to change until the tickets are issued.

Domestic add-on tickets:

We can assist you with domestic air to connect with our international group air if you wish. Indicate on the registration form which airport you wish us to research air from. We are not responsible for fees or charges incurred in case dates change or the trip is cancelled. However, when buying a domestic add-on ticket through Select we may be able to assist in case of changes.

We will provide you with best schedule to connect with the flight (we are not able to help you with tickets that do not connect directly to the international flight) and the best price we can offer. Our information will be sent to you by e-mail. We require an acceptance within 24 hours of our offer along with full payment otherwise the rate is subject to change based on availability. We cannot quote any domestic air requests more than twice.

Business Class and Economy Plus Seats:

We are happy to assist you with business class and economy plus seats. Passengers must be registered on one of our trips to receive a quote. We will quote the available rate which is subject to change until we receive payment to purchase the seats. Usually Economy Plus Seats require the group tickets to be issued before the ability to upgrade.

Passport and Visa information:

All airlines require us to submit valid passport information including full name (first, middle and last), date of birth, gender, country, in which your passport has been issued and passport expiration date. To ensure that we can provide this information accurately, we require a photo copy of each person's passport traveling on each tour. Your passport must be valid 6 months from the trip return date. It is the passenger's responsibility to check if visas are required for the destinations visited and to obtain any necessary travel documents. Select International Tours does not provide information or assistance about passports or visa requirements.

Frequent Flyer Numbers:

Select International cannot assist if you wish to reserve air using FF miles. We can update your record with Frequent Flyer #'s only if you note the number on the registration form. Otherwise please call the airline directly.

Seat Requests & Seat Changes

Select International Tours DOES NOT provide assistance with passenger's seating preferences or specific seat requests. Due to the large number of passengers we work with, we are unable to provide this service unless the request is due to a medical issue. In this case, we will request a seat with the airline but cannot guarantee that the seat will be confirmed. Please understand that although requests are being made directly with the airline, not every request is guaranteed or granted by the airline. If you would like to have a seat number assigned, it is best to contact the airline directly upon receipt of your ticket confirmation # or change your seats at the time of check-in at the airport prior to departure.

“Land Only” (not purchasing group air with Select International Tour Package:

We understand that some passengers may wish to purchase their own air transportation. Arranging transportation on your own may give you the ability to use flight miles for your ticket, secure the seat you desire/require, or deviate from the group. We offer land only prices on all our tours.

Airport transfers are not provided for passengers purchasing land only (not purchasing air with us) if arriving or departing at any time different from the group. If you wish to enjoy the benefit of the group transfer, please be sure you are at the airport at the same time as the group. On certain itineraries airport transfers, may be very costly as the group may be traveling a far distance from the airport on the first or last day.

If the flight schedule you purchase arrives or departs at a time different from the group, it is your responsibility to join the group either at the airport or at the first hotel.

If you register for the air and land package and convert to land only, a \$ 100.00 service charge will be assessed should the change be made within 90 days of departure.

Flight cancellations or delays:

In case your flight is cancelled or delayed please work with the airline directly at the airport to be rebooked on the first available flight out. Once you know your new flight and time of arrival contact the emergency number provided in your travel documents to notify your guide of the delay. Your travel documents will contain an emergency number and the guide's phone. Any incurred costs are out of pocket and not included in the trip cost. The cost of private transfers in case of delays are not covered as part of your trip cost. You may file a claim with your Travel Protection Insurance company or with the airlines upon your return. Receipts will be required.

Single rooms:

A limited number of single rooms are available on each trip. If you wish to share a room let us know at the time of registration. We will attempt to connect you with another person looking to share. The cost of Travel Protection insurance will be adjusted to reflect the single supplement as insurance cost depends on total trip cost. Should we not be able to accommodate all single room requests and you are not able or willing to share, a complete refund will be provided.

If your roommate cancels, and the room is converted into single usage, a single supplement will be charged.

How much walking will there be on this trip?

This active program covers a good amount of ground each day. The days are busy, usually starting with a wake-up call around 7AM and departure by 9AM or earlier. We aim to be back at the hotel between 5PM and 6PM. Times may vary depending on destination and program.

Expect from three to four hours walking on some touring days. The pace is moderate, however you will encounter some uneven surfaces, stairs, steps, cobblestones, and significant slopes. Some tours require walking in the open air with no shade and no seating available.

**Scroll to the end of the
document for
registration form**



SELECT INTERNATIONAL



TRAVEL PROTECTION PLAN

SCHEDULE OF INSURANCE COVERAGE AND OTHER NON-INSURANCE SERVICES

Benefit	Maximum Benefit Amount
Trip Cancellation**	up to 100% of the non-refundable insured Trip Cost*
Trip Interruption**	up to 150% of the non-refundable insured Trip Cost*
Single Supplement	Included
Trip Delay – 6 hours	to a maximum of \$1,500 (up to \$150/day)
Missed Tour or Cruise Connection	up to \$500
Baggage & Personal Effects	up to \$1,500
Baggage Delay – 24 hours	up to \$400
Political or Security Evacuation and Natural Disaster Evacuation	up to \$100,000
Emergency Accident & Sickness Medical Expense	up to \$50,000
Medical Evacuation & Repatriation of Remains Benefit	up to \$150,000
Optional Cancel for Any Reason (CFAR)***	up to 75% of the non-refundable insured Trip Cost*
Non-Insurance Worldwide Emergency Assistance Services	Included



Coverages may vary and not all coverage is available in all jurisdictions.

* Subject to maximum benefit amount of \$10,000.

** For \$0 Trip Cost, there is no Trip Cancellation and Trip Interruption is limited to \$500 return air ticket cost only. Trip Cancellation/Trip Interruption benefits are only payable if a trip is cancelled/interrupted due to a covered peril.

*** CFAR must be purchased within the time sensitive period and you must cancel your trip no later than 48 hours prior to scheduled departure date of your trip. This benefit does not cover penalties associated with any air or other Travel Arrangements not provided by Travel Supplier or the failure of Travel Supplier to provide the bargained for Travel Arrangements due to cessation of operations for any reason. Additional cost applies. Not available to residents of NY.

PER PERSON RATES

Cost of Trip	Rates	With CFAR*	Cost of Trip	Rates	With CFAR*
\$0-\$500	\$40	\$62	\$4,501-\$5,000	\$382	\$589
\$501-\$1,000	\$73	\$112	\$5,001-\$5,500	\$439	\$677
\$1,001-\$1,500	\$107	\$164	\$5,501-\$6,000	\$468	\$721
\$1,501-\$2,000	\$146	\$224	\$6,001-\$6,500	\$506	\$780
\$2,001-\$2,500	\$184	\$283	\$6,501-\$7,000	\$545	\$839
\$2,501-\$3,000	\$229	\$353	\$7,001-\$8,000	\$583	\$898
\$3,001-\$3,500	\$283	\$436	\$8,001-\$9,000	\$660	\$1,017
\$3,501-\$4,000	\$313	\$482	\$9,001-\$10,000	\$750	\$1,155
\$4,001-\$4,500	\$335	\$517			

The above rates are for trips up to 30 days – for each day over 30 add \$6 per person per day.

All of the above rates are for the plan which includes insurance and non-insurance services.

*Optional Cancel For Any Reason (CFAR) benefit not available to residents of New York State.

EXCLUSIONS AND LIMITATIONS

Unless otherwise shown below, these exclusions apply to You, Your Traveling Companion, or Family Member scheduled and booked to travel with You.

The following exclusion(s) appl(y)(ies) to the Trip Cancellation and Trip Interruption. We will not pay for any loss or expense caused due to, arising or resulting from: 1. a Pre-Existing Medical Condition, as defined in the plan document.

The following exclusions apply to Medical Expense benefits: Benefits are not payable for any loss or expense caused due to, arising or resulting from: 1. routine physical examinations or routine dental care; 2. traveling for the purpose or intent of securing medical treatment or advice; 3. Alcohol or substance abuse or treatment for the same; 4. Normal pregnancy (except Complications of Pregnancy) or childbirth, or elective abortion; 5. a Mental, Nervous or Psychological Condition or Disorder unless Hospitalized or Partially Hospitalized while the plan is in effect; 6. Your participation in Adventure or Extreme Activities, riding or driving in races, or participation in speed or endurance competition or events, except as a spectator; 7. Your participation in an organized athletic or sporting competition, contest, or stunt under contract in exchange for an agreed-upon salary or compensation. This does not include athletes participating in exchange for a scholarship or tuition.

In addition to any applicable benefit-specific exclusion, the following general exclusions apply to all losses and all benefits.

We will not pay for any loss or expense caused due to, arising or resulting from: 1. suicide, attempted suicide or any intentionally self-inflicted injury of You, a Traveling Companion, Family Member or Business Partner booked and scheduled to travel with You, while sane or insane; 2. being under the influence of drugs or narcotics, unless administered upon the advice of a Physician as prescribed; 3. activities, losses, or claims involving or resulting from possession, production, processing, sale, or use of marijuana, illegal drugs, alcohol or substances are excluded from coverage; 4. war or act of war, including invasion, acts of foreign enemies, hostilities between nations (whether declared or undeclared), or civil war; 5. the commission of or attempt to commit a felony or being engaged in an illegal occupation by You, a Traveling Companion, Family Member, or Business Partner; 6. directly or indirectly, the actual, alleged or threatened use, discharge, dispersal, seepage, migration, escape, release or exposure to any hazardous biological, chemical, nuclear radioactive weapon, device, material, gas, matter or contamination; 7. piloting or learning to pilot or acting as a member of the crew of any aircraft.

Additional Limitations and Exclusions Specific to Baggage and Personal Effects and Baggage Delay: Benefits are not for any loss or damage caused by or resulting from: breakage of brittle or fragile articles; wear and tear or gradual deterioration; confiscation or appropriation by order of any government or custom's rule; theft or pilferage while left in any unlocked or unattended vehicle; property illegally acquired, kept, stored or transported; Your negligent acts or omissions; or property shipped as freight or shipped prior to the Scheduled Departure Date; or electrical current, including electric arcing that damages or destroys electrical devices or appliances. We will not provide benefits for any loss or damage for the following items: a. Animals; b. automobiles and automobile equipment; c. boats or other vehicles or conveyances; d. trailers; e. motors; f. aircraft; g. bicycles, except when checked as baggage with a Common Carrier; h. household effects and furnishings; i. antiques and collectors' items; j. any type of eyeglasses, contact lenses, artificial teeth, dentures, dental braces, dental bridges, or hearing aids; k. artificial limbs or other prosthetic devices; l. prescribed medications; m. keys, money, stamps, tickets and documents (except as otherwise specified covered in the plan); n. securities, stamps, tickets and documents (except as coverage is otherwise specifically provided in the plan); o. professional or occupational equipment or property, whether or not electronic business equipment; p. telephones or wireless devices, computer hardware or software.

The plan also contains exclusions that apply specifically to the Political or Security Evacuation coverage and the Natural Disaster Evacuation Coverage.

Excess Insurance: Insurance provided by this plan shall be in excess of all other valid and collectible insurance or indemnity or as required by state law. If at the time of the occurrence of any loss there is other valid and collectible insurance or indemnity in place, We shall be liable only for the excess of the amount of loss, over the amount of such other insurance or indemnity, and applicable deductible. Recovery of losses from other parties does not result in a refund of plan cost paid.

Pre-Existing Condition Exclusion Waiver

The Pre-Existing Condition Exclusion will be waived if the protection plan payment or deposit is received within the time sensitive period and you are not disabled from travel at the time you pay the plan cost based on Physician assessment.

PLEASE REFER TO THE PLAN DOCUMENTS FOR A COMPLETE DESCRIPTION OF COVERAGE.

This advertisement contains highlights of the plans, which include travel insurance coverages underwritten by United States Fire Insurance Company under form series T7000 et. al., T210 et. al. and TP-401 et. al. The Crum & Forster group of companies is rated A (Excellent) by AM Best 2022. C&F and Crum & Forster are registered trademarks of United States Fire Insurance Company. The plans also contain non insurance Travel Assistance Services provided by C&F Services through Active Claims Management (2018) Inc., operating as "Active Care Management", "ACM", "Global Excel Management", and/or "Global Excel". Coverages may vary and not all coverage is available in all jurisdictions. **Insurance coverages are subject to the terms, limitations and exclusions in the plan, including an exclusion for pre-existing conditions.** In most states, your travel retailer is not a licensed insurance producer/agent, and is not qualified or authorized to answer technical questions about the terms, benefits, exclusions, and conditions of the insurance offered or to evaluate the adequacy of your existing insurance coverage. Your travel retailer may provide general information about the plans offered, including a description of the coverage and price. The purchase of travel insurance is not required in order to purchase any other product or service from your travel retailer. Your travel retailer maybe compensated for the purchase of a plan. CA DOI toll free number: 800-927-4357. The cost of your plan is for the entire plan, which consists of both insurance and non-insurance components. Individuals looking to obtain additional information regarding the features and pricing of each travel plan component, please contact Travel Insured: P.O. Box 6503, Glastonbury, CT 06033; 855-752-8303; customercare@travelinsured.com; California license #0113223.

DEPOSITS AND FINAL PAYMENT: Please see the bottom section of this page for instructions on how to enroll on this trip. A **deposit of \$500.00** per person and a copy of your passport picture page should be sent by **June 21, 2024**. **Final payment is due by August 3, 2024**. A late payment fee of **\$100** will be charged per person for all payments received after the final payment date. Please mail your payment to: **Select International Tours, 85 Park Ave., Flemington, NJ 08822 Attn: Rebecca Stoker, 800-842-4842, rebecca@select-intl.com**.

Your passport must be valid through April 11, 2025. Reservations will not be processed until we have passport copies. Prices quoted are based on payments by check. Prices: **\$3,995.00** for land only (air not included); **\$600.00** for group air; **\$4,595.00** for land and air; **\$895.00** for solo traveler, additional cost, (in room by yourself). A non-refundable 4% credit card convenience fee applies to all credit card transactions.

PILGRIMAGE PRICES: Prices are based on minimum 20 passengers. Prices may be adjusted in the event of fewer than 20 passengers, changes in currency conversion rates, or amendments in local government taxes and/or fuel surcharges. Prices are in US dollars. For European travel an exchange rate of US \$1.15 per Euro is assumed.

SOLO TRAVEL: A limited number of single rooms are available. Prices are based on two people per room. We do not guarantee roommates but will do our best to connect you with a someone willing to share.

LAND ONLY OPTION: Land only services start and end at the hotels and do not include any airfare. You are welcome to transfer from the airport with the group if you arrive at the same time, otherwise, transfers are not included.

TOUR CANCELLATION POLICY: Individual deposits are refundable except for a \$350.00 per person handling fee for cancellations made 91 days or more before departure. A \$500.00 non-refundable fee will be assessed if the reservation is canceled between 90 and 60 days prior to departure. Within 60 days of departure all payments are non-refundable regardless of reason for cancellations. All airline tickets are non-refundable once issued. All cancellations must be in writing. Unused portions of the trip are not refundable. If a roommate cancels, the cost of a solo supplement will be added to your invoice. You may be eligible for a refund through your travel protection. Refer to the U.S. Policy by State on our website.

TRIP CANCELLATION PROTECTION: We strongly encourage you to purchase a **Travel Protection Plan**, for the protection of your travel investment. Please consider purchasing this plan at the time of initial deposit in order to be covered for pre-existing conditions.

Visit www.travelinsured.com/agency?agency=47406&p=SEL21 or call **844-440-8133** for details and costs for the Select International Travel Protection Plan with optional Cancel for any reason (CFAR). Please note that CFAR is not available in NY State. The plans contain insurance benefits underwritten by the United States Fire Insurance Company. The plans also contain non-insurance Travel Assistance Services that are provided by an independent organization.

AIRLINE, SEATING AND SPECIAL REQUESTS: To best accommodate our pilgrims, we often utilize Group Air Reservations. These allow more predictable transfer and tour schedules. However, when booking Group Air, the airline (not

Select International Tours) controls seating assignments. If you require very specific seats, we suggest that you book your own airfare and take advantage of our "Land Only" options. You may communicate directly with the airline to request seating changes, provide mileage program information, or change passenger contact information once you receive ticket numbers—approximately three (3) weeks prior to departure. We work with instant purchase airline tickets and or group rates. If you switch from air and land to land only within 90 days from departure you will be charged a \$100 service fee in addition to any airline charges. All special needs and requests due to medical or dietary restrictions must be requested in writing at least 60 days prior to departure. Quotes for Business class and Premium Coach seats are available upon written request; as are add-ons from your hometown airport. If you require very specific airlines or schedules, we suggest that you book your own airfare and take advantage of our "Land Only" options.

WALKING: Our trips require daily walking, sometimes up or down slopes, steps, and uneven terrain. We recommend preparing oneself, by walking before the trip. Anyone needing assistance is required to be accompanied by a qualified and physically-able travel companion. We are not responsible for any medical condition that occurs prior, during or after the trip.

SAFETY PROCEDURES: Select International Tours has undertaken a reasonable inquiry, with all the suppliers (including airlines, hotels, bus companies and other service providers) used on our trips to ensure they have instigated the best available procedures regarding the pandemic- protective policies advised by local government and health authorities. The client understands and agrees that the supplier(s) may not apply those policies as diligently as the policies suggest. In addition even if the supplier makes a good faith effort to enforce its good practices, some travelers may simply refuse to cooperate. Therefore the client agrees not to hold Select International Tours or group leaders responsible should they or anyone on the trip contract COVID-19 or any other illness during or after the trip

RESPONSIBILITY: By accepting this confirmation, you agree that the Group Leaders and Select International Tours, Inc. have no responsibility for any acts or omission of the travel suppliers in your itinerary and during your trip. We have no special knowledge regarding the financial conditions of the suppliers, unsafe travel conditions, health hazards, or weather hazards at locations traveled. We are not responsible for flight delays or cancellations or any charges incurred due to unforeseen circumstances. Unused portions of the trip are non-refundable. For information about destination climate, risks, and safety please consult the appropriate on-line resources. For health information consult the Center for Disease Control and Prevention. You are responsible for checking passport, visa, vaccination, or other entry requirements of your destinations. Itineraries are subject to change. We are not responsible for any damaged, lost, or stolen articles. We are not responsible for any sickness, injury, or death during or after the trip. Travel documents will be mailed out approximately three (3) weeks before departure. Please review them carefully for any errors.

SHIPPING & HANDLING: \$15.00 per person—not included in package price—will be added to each invoice. Your invoice will confirm the trip registration.

Irish Wisdom and Wonder with Katie Marquette and Christy Isinger

Trip Code: 24RS10IRKM

October 2-11, 2024

THE BENEFITS OF REGISTERING ONLINE FOR YOUR PILGRIMAGE:

Over the last several years, our clients have requested more control over the trip booking process, payments, and, most importantly, communication about the trips. Our response to these comments and requests had taken two years to implement, but we are happy with the results. Select has committed to a major financial and time investment in building an online reservation system that is easy to navigate using your home computer, tablet, or smartphone. We have addressed most of the requests and suggestions provided by clients. The benefits of the new system to you are a simplified registration process, the ability to access your information at your convenience, review your payment history and get trip information while easily communicating with your Account Manager and group leader.

When you register online, you will receive regular email updates about your trip and useful tips and tricks for making your international travel more comfortable and enjoyable. And best of all, you can register online even if you prefer to pay by check or wire transfer; just choose that option upon checkout.

We understand that some people are not comfortable with technology and prefer to register via mail-in paper registration, regardless of the many benefits of registering online. To make that easy, we have created a generic registration form on our website at <https://selectinternationaltours.com/register-online/>. You may download and print the form, fill it out and mail it with your check to Select International Tours. However, before you choose to register by mail, please know that we cannot communicate with people who do not register online as frequently and seamlessly. And you may miss some important communication regarding balances and trip preparation, as well as communication from your group leaders. We want you to be in charge and be comfortable with the registration process; our job is to inform you so you can choose the best system for you.

To learn how easy it is to register online, please view THIS SHORT 6-minute VIDEO that explains the process at <https://selectinternationaltours.com/register-online/>.

Secure Your Spot!

Register online* ✓

Pay the deposit ✓

Complete the tasks
in your online profile ✓

*See how easy it is to
register online:



selectinternationaltours.com/easy/